



## The California Bungalow Within

**ATTIC**  
GROUP

Betty and John wanted more space for their three children, and relief from everyone sharing a single, small, basic bathroom.

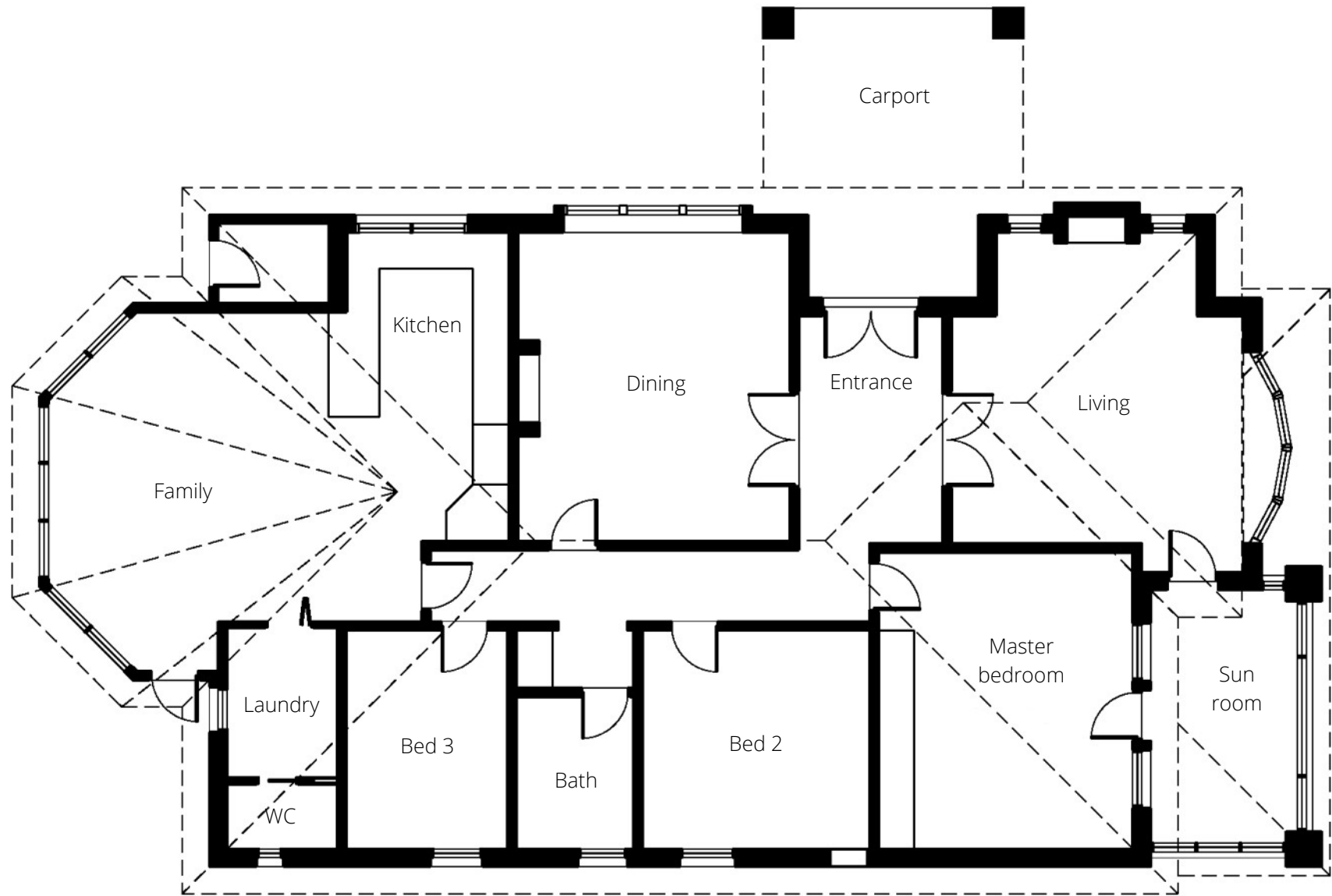
A new main bathroom downstairs was complemented with two spacious new bedrooms and an extra bathroom upstairs, accommodated entirely inside the existing roof line, with skylights providing generous natural light.

The architect-designed attic extension was constructed under the watchful eye of the Attic Group's professional project management team, employing a process specially crafted to minimise disruptions to Betty and John's family.

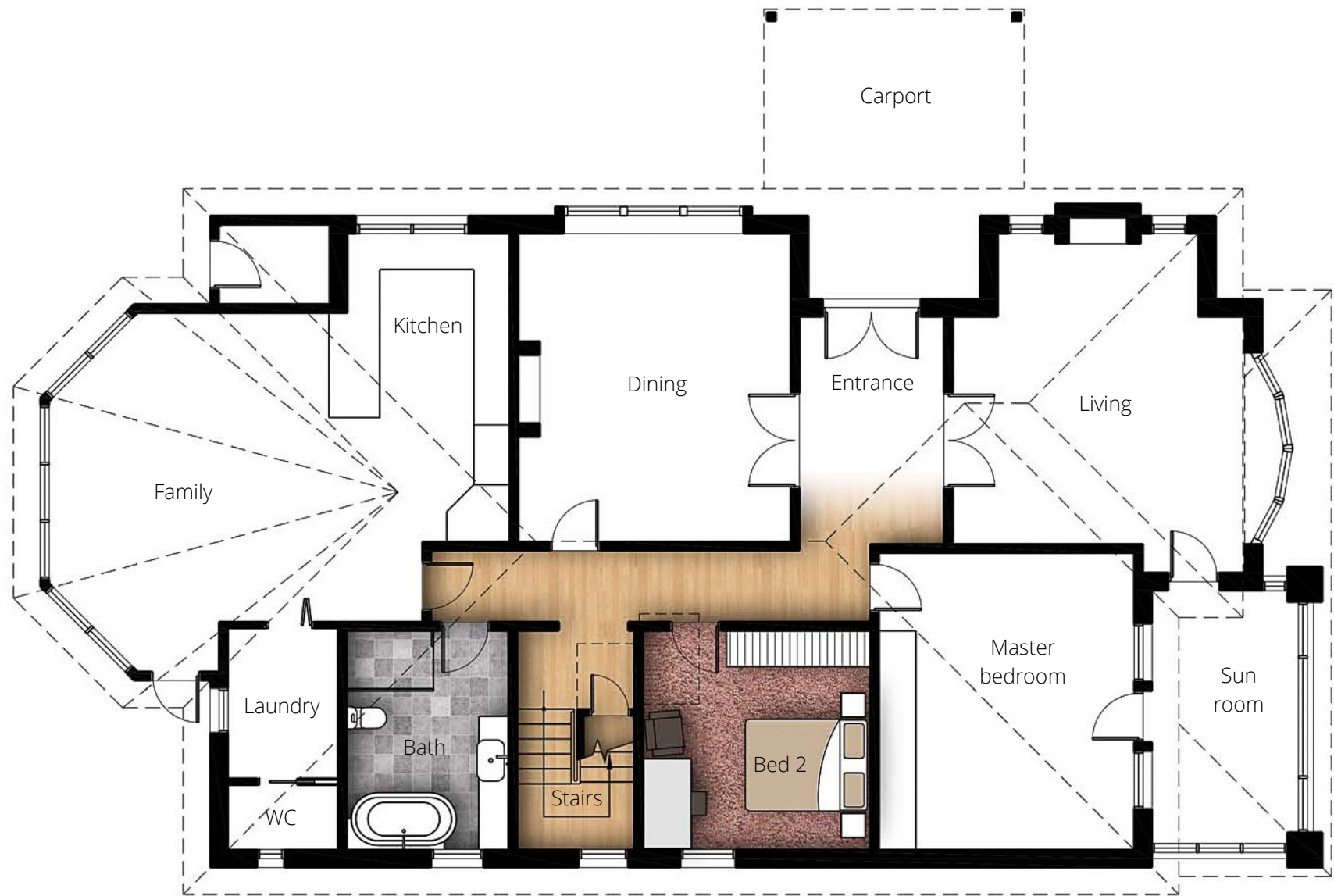
**ATTIC**  
**GROUP**

LADDERS | STORAGE | SKYLIGHTS | CONVERSIONS

1300 655 525 | [atticgroup.com.au](http://atticgroup.com.au)

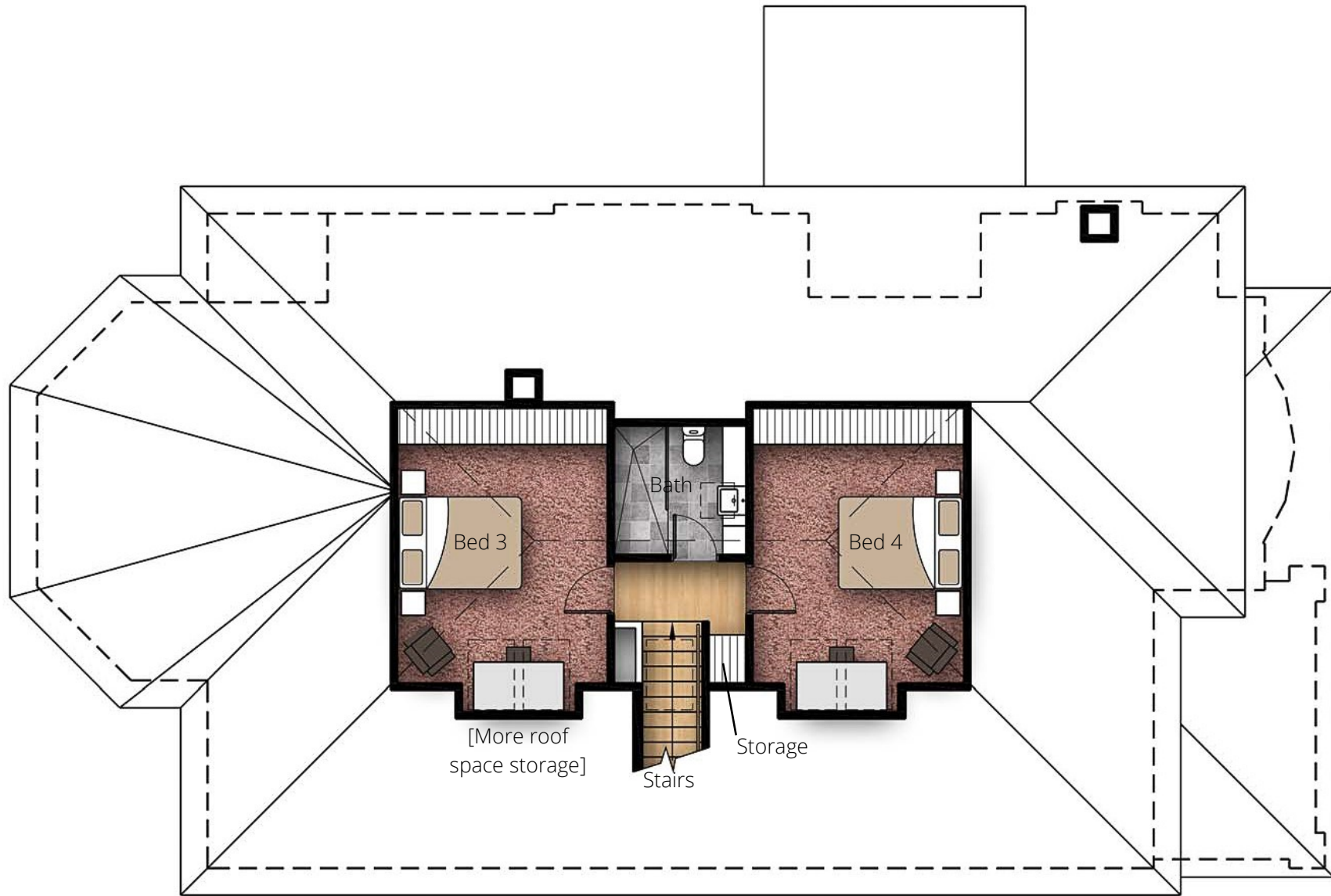


Original home

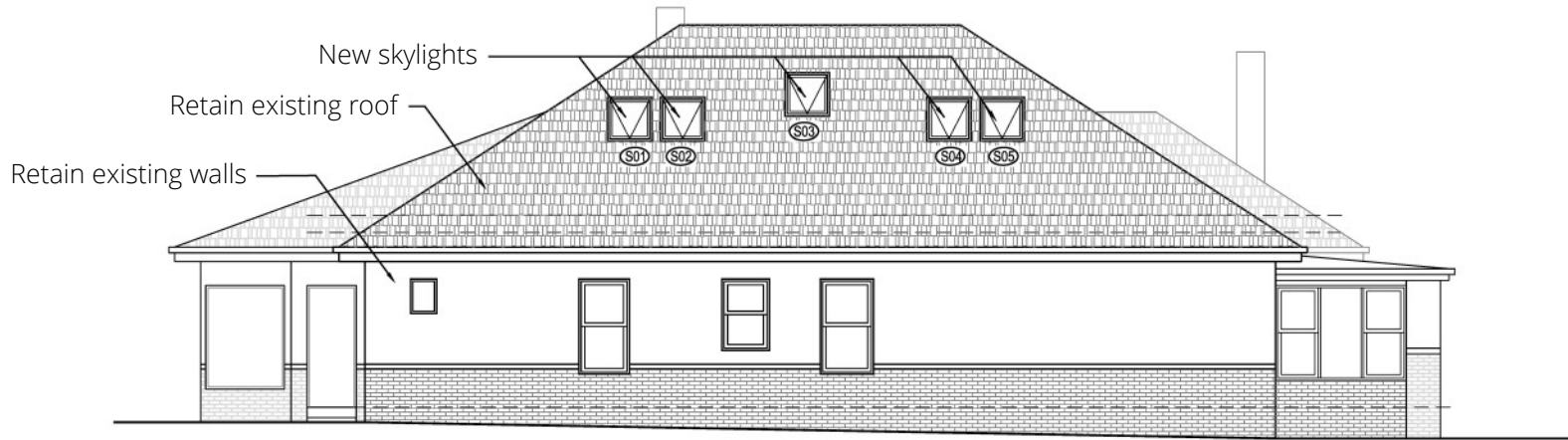


Architect plan — ground floor extension

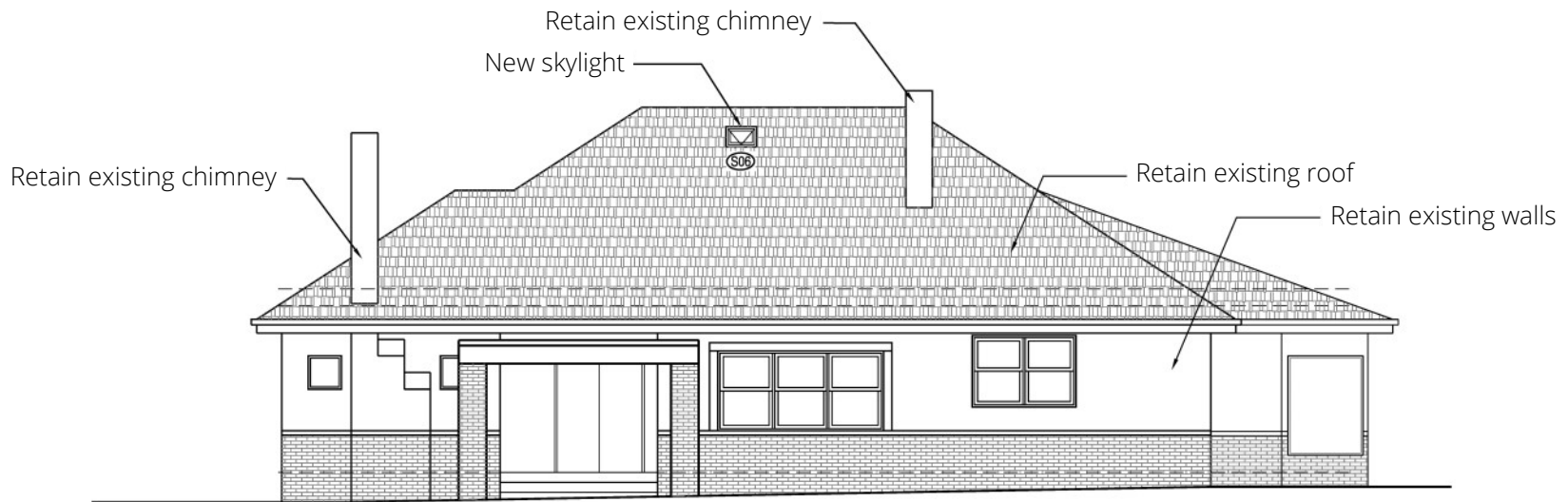




Architect plan — first floor addition



**South elevation**



**North elevation**

External change limited to new skylights





Only skylights are visible from the street





Only skylights are visible from the street





Original bathroom



New downstairs bathroom

















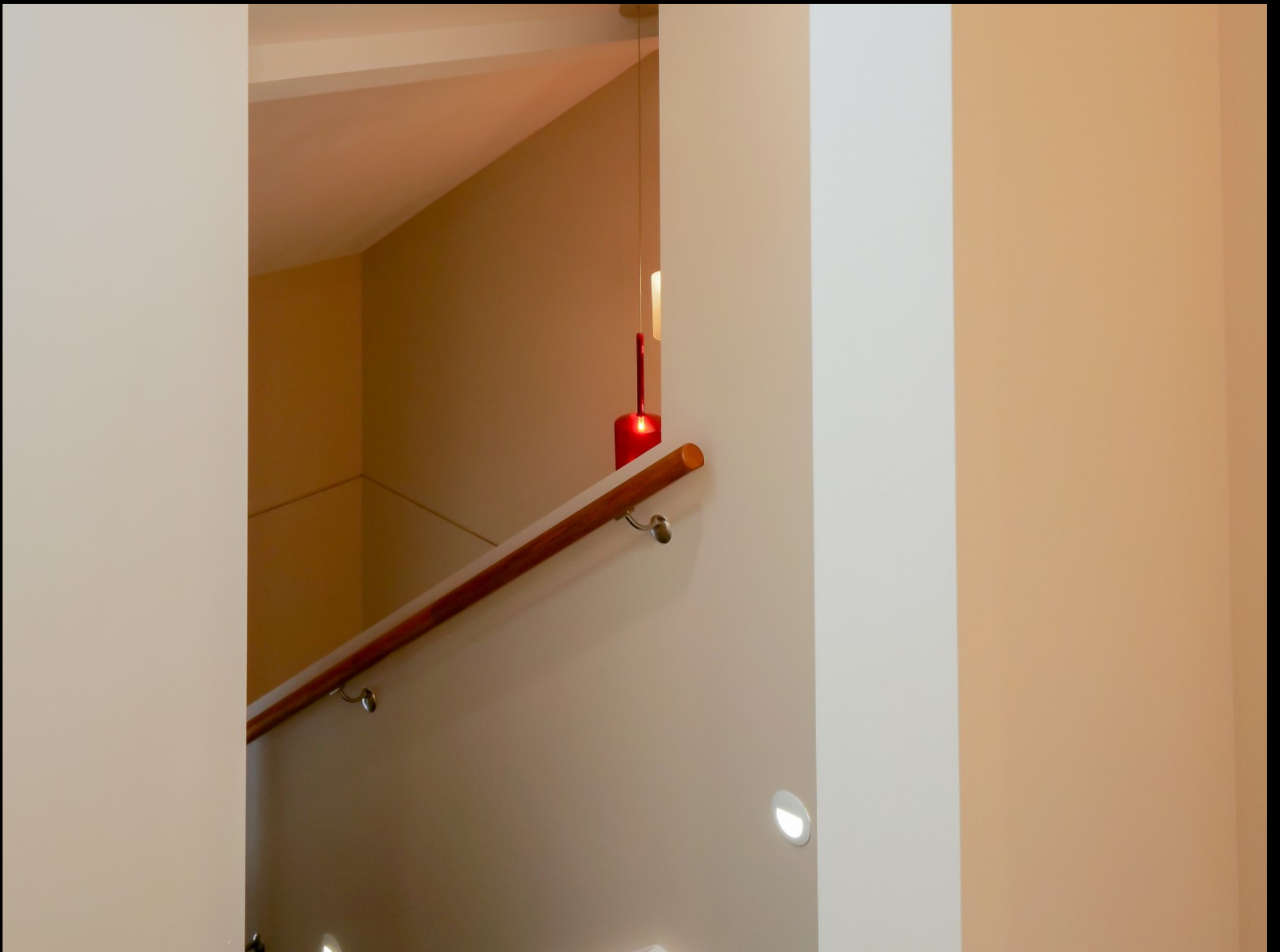


Stairs to new first floor













New upstairs  
bathroom









New upstairs bedroom 3





New upstairs bedroom 4









*"We now have a large bathroom downstairs, and two of my daughters have their own bathroom upstairs, so it's a lot more peaceful. Everyone's got their own space now."*

— Betty



*"My girls absolutely love it. They love having their own bedrooms. It's great having their own space. They love their built-in wardrobes, they love having their own bathroom.*

*When they have friends over, it's just so much easier. The friends will go upstairs and they've got their privacy.*

*I would highly recommend Attic Group. We're so happy with the quality of the work, with the service. The communication was excellent. They were pretty right on track for time.*

*We were in budget which was wonderful.*

*We love it. It's turned out better than I thought."*





# ATTIC GROUP

LADDERS | STORAGE | SKYLIGHTS | CONVERSIONS

1300 655 525 | [atticgroup.com.au](http://atticgroup.com.au)

Melbourne • Sydney • Adelaide