

A two-story white house with a red-tiled roof and a white picket fence in the foreground. The house features a prominent front porch with white columns and a large window with a decorative leaded glass pattern. The roof has decorative finials on the gables. A small security camera is mounted on the side of the house. The sky is blue with some clouds, and a tree branch is visible in the top right corner.

Young family moves up

ATTIC
GROUP

Yvette and Josh found themselves struggling to juggle their new family in the space available in their period home. They wanted an affordable extension that not only accommodated their two young children in the present, but provided space that continued to suit as the children grow up.

The additional first floor was accommodated in a style matching the existing home and in harmony with the streetscape.

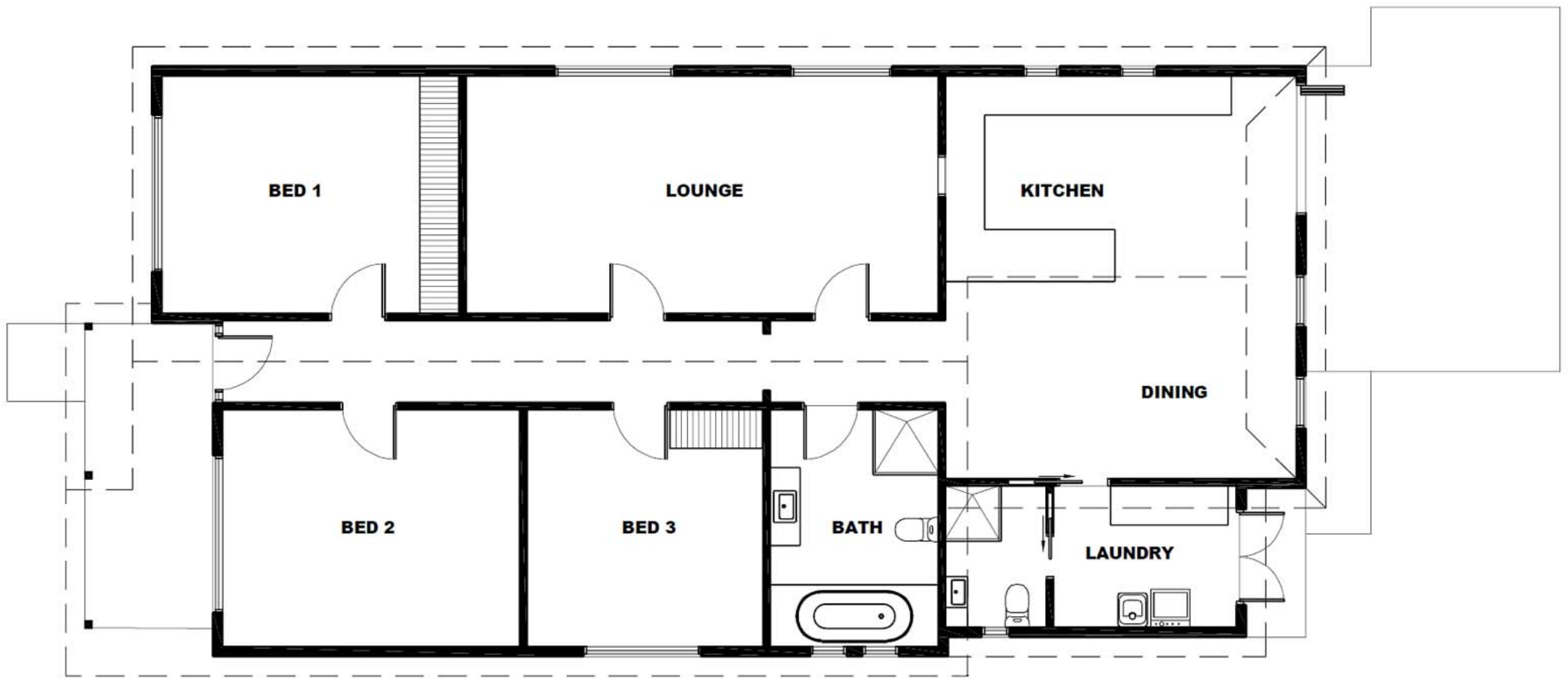
A cleverly designed staircase now leads to a light-filled landing, a new modern bathroom, an entertainment area, and two new bedrooms with ample light.

Below the stairs, a generous new storage space accommodates a growing wine collection away from the heat and light.

**ATTIC
GROUP**

LADDERS | STORAGE | SKYLIGHTS | CONVERSIONS

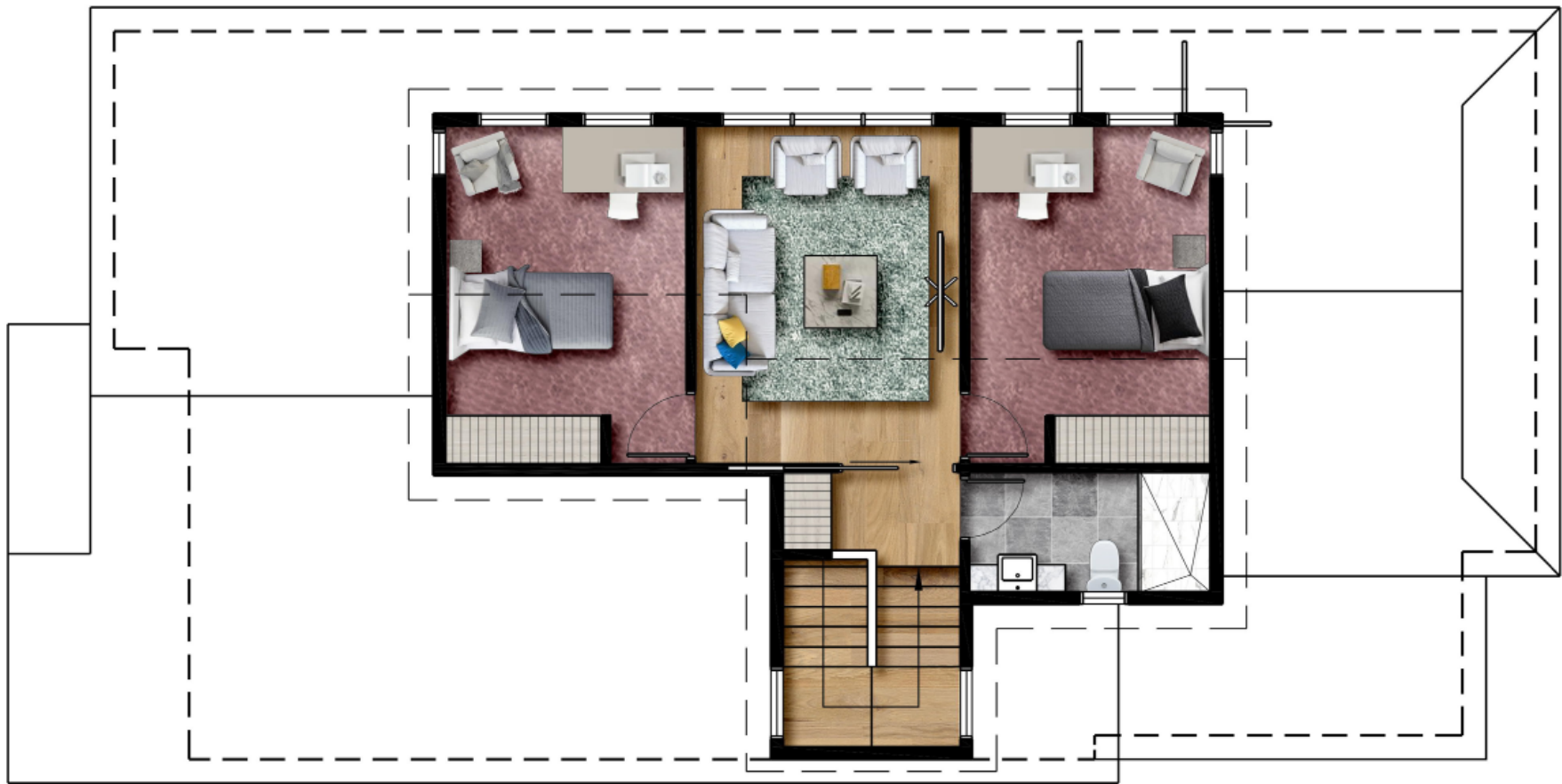
1300 655 525 | atticgroup.com.au



Original home



Architect plan — ground floor updated



Architect plan — first floor addition



PROPOSED EAST ELEVATION



PROPOSED NORTH ELEVATION



PROPOSED WEST ELEVATION



PROPOSED SOUTH ELEVATION

Architect elevation











Left: Original downstairs bathroom

Right: Clever design allows the new staircase middle landing to intrude without sacrificing usable bathroom space.



In the (now) office, the intrusion of the staircase results in no lost space, with the area now serving as a generous under-stair wine storage facility.











Access to ceiling space



Bedroom 1





Bedroom 2





“Right from the get-go Attic Group really listened to what we needed... to make sure that what we built now would grow with us as the kids grow up. Attic were able to wrap their expertise around it and create something that was brilliant. We got what we wanted, not what we initially thought we wanted.

For the duration of the renovation, we actually stayed in the house, and that was actually far less stressful than we were expecting. Everyone was incredibly accommodating, really kind and friendly and reliable.

It's so great to be living in this house and to see it transform into something that is going to be lived in and loved for decades to come. It's just built with our family in mind for what it is now and what it's going to be.

We would absolutely recommend Attic Group and in fact have to freinds, colleagues and even strangers. They've been brilliant from start to finish.”

— Yvette & Josh

the alphabet
l'aphabet



Mm

Nn

nest

Oo



Pp
penguin
pingouin



ATTIC GROUP

LADDERS | STORAGE | SKYLIGHTS | CONVERSIONS

1300 655 525 | atticgroup.com.au

GET THE ATTIC ADVANTAGE

Melbourne • Sydney