



Inner City Terrace Reinvented

ATTIC
GROUP



Lis and Karl and their two children shared a compact 3-bedroom city terrace with a single bathroom.

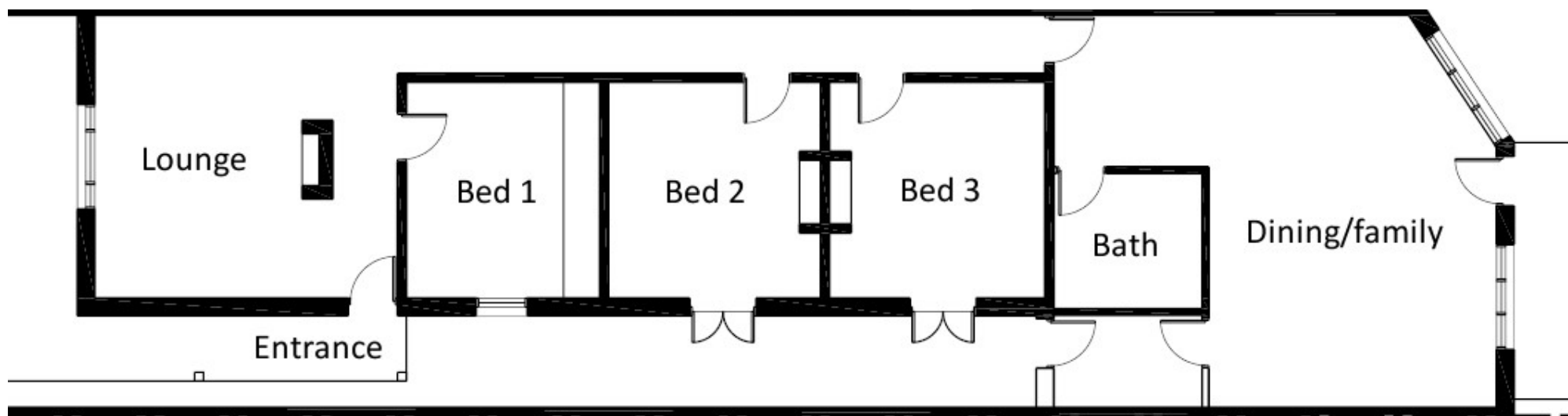
The reinvention changed all but the front room, with a huge new bathroom, a modern kitchen and open lounge/family area opening onto the rear garden. Upstairs, the children now enjoy their own new bedrooms, lounge area and bathroom.

Attic Group, with Teo + Perperis Architects, redesigned the home to incorporate more generous spaces downstairs, a staircase, and an entire new first floor within the existing house footprint — without having to sacrifice the back yard.



LADDERS | STORAGE | SKYLIGHTS | CONVERSIONS

1300 655 525 | atticgroup.com.au



Original home



Architect plan — ground floor updated



Architect plan — first floor addition



PROPOSED WEST ELEVATION



PROPOSED EAST ELEVATION



PROPOSED SOUTH ELEVATION

Architect elevations



Original home



Reinvented home





Before















Before



Before



















"Thanks for all the work Karen and Stew from Attic Group, and to Cheng from Teo + Perperis Architects, and to the tradies and staff who made it happen.

We are very happy in our new place."

— Lis & Karl





ATTIC GROUP

LADDERS | STORAGE | SKYLIGHTS | CONVERSIONS

1300 655 525 | atticgroup.com.au

Melbourne • Sydney • Adelaide